



October 2018



# KITSAP COUNTY 4-H

## Important Dates

- **Oct. 3rd - 14th** - Paper Clover Fundraiser at Tractor Supply
- **Oct. 13th** - 4-H at the Kitsap Mall
- **Oct. 19th-21st** - 4-H Forum
- **Oct. 28th** - Leader Training
- **Nov. 2nd to 4th** - Teen Rally
- **Nov. 7th** - 4-H Council Meeting
- **Nov. 9th** - Awards Night
- **Jan. 12th** - 4-H Academy
- **March 1st-2nd** - Public Presentations

## Welcome to the New 4-H Year!

Enrollment for the 2018-2019 4-H year is open at [4HOnline](#). Please remember all youth and volunteers need to re-enroll. The youth fee for the year is \$45, \$25 WA State fee and \$20 Kitsap County fee. For more information about enrolling in 4-H, fees, family caps, or to apply for a scholarship please visit the [Enrollment Changes](#) page on our website, [WSU Extension—Kitsap](#). No youth is ever denied a scholarship. Cash and check payments can be submitted to the County Extension office and checks should be made payable to Kitsap County 4-H Council.

Congratulations  
To Our 4-H  
Leaders of the Year

*Bonnie Moren*  
*And*  
*Corrina Coan*

Thank you for all that you do! Your dedication to our 4-H youth, clubs, program, and community are greatly appreciated!



## 4-H at the Kitsap Mall

Saturday, October 13, 2018  
Noon—4 PM • Kitsap Mall

Come join us at the Kitsap Mall for a fun day celebrating 4-H! This is a great opportunity to show the public what 4-H is about and what you do in your club. If your club or project would like to have a booth please email [elisabeth.nilsson@wsu.edu](mailto:elisabeth.nilsson@wsu.edu). If your club cannot attend feel free to have a display with your club and contact information. We Look forward to seeing you there!

# 4-H Member News

## 4-H Awards Night

The 4-H Awards Night is a wonderful evening celebrating the achievements of our 4-H youth. Awards Night will be on **November 9th, 2018** at the Kitsap Golf and Country Club, 3885 NW Golf Club Hill Rd., Bremerton.

Please bring a side dish or dessert to share. There will be a raffle and silent auction of amazing baskets! Funds raised goes to support the 4-H Awards program.

4-H Awards Night begins at 5:30pm with social time (great time to get your raffle tickets) followed by the awards ceremony at 6:00pm

## 4-H Mentors Wanted

Kitsap County 4-H is preparing to start the Mentorship Program for 2018-2019. Teen and adult mentors are needed for 4 hours a month (2 hours on the 1st & 3 Thursdays) mentoring youth and helping them explore 4-H! If you are interested in being a 4-H Mentor please contact Sheila by at [Sheila.jernigan@wsu.edu](mailto:Sheila.jernigan@wsu.edu) or by phone at (360) 337-7157 ext. #6268.



MENTORS  
WANTED!



## Recruiting 4-H Youth to Participate in the REAL media Project!

Are you 13-17 years old?

Interested in learning about advertising strategies & techniques?

Complete the REAL media program & 4 online surveys to receive up to \$50. For more information visit [REAL media](#).

## 2019 4-H Youth in Action Awards



The 4-H Youth in Action Program recognizes four confident young leaders in our core pillar areas: agriculture, civic engagement, healthy living and STEM.

### Pillar Winners

Each Pillar Winner will experience an exciting year of telling their 4-H story and celebrating their leadership.

Winners receive:

- \$5,000 higher education scholarship
- Promotional video showcasing their 4-H impact story
- All-expenses paid trip to Washington, D.C. for National 4-H Council's Legacy Awards
- Networking opportunities with 4-H celebrities and other prominent alumni
- Recognition as the official 4-H youth spokesperson for their pillar

One Pillar Winner will be selected as the 4-H Youth in Action National Award Winner and will receive an additional higher education scholarship. Read all about the [Guidelines and Application](#) process as applications are due October 22.

## Kitsap County Ambassadors

Kitsap County 4-H is introducing County Ambassadors, a new opportunity for 4-H members 13 years and older. The mission of the Washington State County Ambassador Program is to assist teen aged youth, build and strengthen inter-personal and leadership skills, empowering their development into confident leaders and citizens, which will result in strong county 4-H program and local community.

If you are interested in becoming a Kitsap County Ambassador or would like more information please contact the 4-H office by email at [kitsap.county4h@wsu.edu](mailto:kitsap.county4h@wsu.edu).

# Community News

## News from Kitsap County:

Kitsap County is partnering with Washington State University (WSU) Extension to survey residents about how they use the WSU Kitsap Extension programs and services, and which are most valuable to their families and communities.



The survey, which takes about 10 minutes to complete, asks about residents' familiarity with WSU Kitsap Extension, the frequency of their participation and suggestions for outreach and expanded programs and services. You can [complete the survey online](#). Participation is voluntary, and responses are confidential.

"We want to be sure we are focusing on the needs of the community and using Kitsap County's resources to support the programs that make the most difference for our citizens," said Commissioner Charlotte Garrido.

WSU Kitsap Extension has served the county since 1917, coordinating educational and outreach programs such as the Master Gardeners, 4-H Youth Development, Strengthening Families, Noxious Weed Control, Stream and Salmon Stewards, Rain Garden Mentors, Beach Naturalists and Small Farm Resources. WSU Kitsap extension has over 550 volunteers who support these programs annually.

Send questions about the survey to [cmsanders@wsu.edu](mailto:cmsanders@wsu.edu) or for more information, contact the Kitsap County Commissioners' Office at (360) 337-7080. Learn more about programs at [Kitsap WSU Extension online](#).

**Click here to complete the survey:**

[https://wsu.co1.qualtrics.com/jfe/form/SV\\_81fcQdm5gW88OTr](https://wsu.co1.qualtrics.com/jfe/form/SV_81fcQdm5gW88OTr)

## 4-H Volunteer and Leader Training

If you are interested in starting a club, or you haven't attended a **Leader** Training in the past two years, you must attend a **Leader** Training!

To become a "certified" volunteer you must attend a **Volunteer** Training!

\*Minimum of 5 people required\*

**Location:** 345 6th street, Bremerton WA,  
Norm Dicks Building

**10/28/18 - 2pm to 5pm:** **Volunteer** Training

**1/19/19 - 9am to 1pm:** **Leader** Training

**Sign Up Here:**  
[4-H Training](#)

## Want to Build Leadership & Team Work in Your Club?

The Gibbs Lake Low Ropes Challenge Course offers a series of fun and engaging outdoor learning activities that help strengthen relationships, improve communication and develop leadership skills and abilities. This course is a wonderful experience for intermediate and older 4-H youth. For more information or to bring your club to the Gibbs Lake Challenge Course contact Tanya Barnett at (360) 379-5610 ext. 208.



## 4-H in our Community

### In the Spotlight Monthly 4-H Showcases at the Kitsap Mall

Let's keep the 4-H momentum going every month! The second Saturday of each month 4-H will have the opportunity to showcase a club, project, or special event at the Kitsap Mall.

To sign up and book a month please contact Lis by phone at 360-337-7157 ext. #6270 or by email at [Elisabeth.nilsson@wsu.edu](mailto:Elisabeth.nilsson@wsu.edu).

### NW/SW Teen Rally - Fall Adventures!

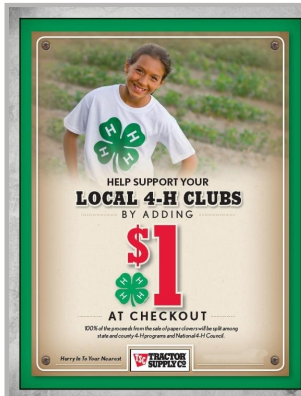
- Where: YMCA Camp Seymour in Gig Harbor
- Who: 7th - 12th graders
- When: November 2nd to 4th
- Cost: \$120 Early Bird Price Extended until October 14th



Join the fun, learn new things and meet lots of new people! Get registered today at: [NW/SW Teen Rally](#)

### Tractor Supply Company Supports 4-H with the Paper Clover Campaign!

Stop by TSC, donate \$1 and get your own Paper Clover between October 3rd - October 14th!



### We are extending National 4-H Week to be Kitsap 4-H Month!

How will you celebrate?

Join us at the mall on Oct. 13th, tell a friend about your project, take a selfie in your 4-H shirt or a group picture at your club meeting and share it on [Facebook!](#)



## Contact Us!

### Joy Lile

Regional 4-H Specialist  
360-337-7157 Ext. #6266  
[joy.lile@wsu.edu](mailto:joy.lile@wsu.edu)

### Lis Nilsson

4-H Program Coordinator  
360-337-7157 Ext. #6270  
[elisabeth.nilsson@wsu.edu](mailto:elisabeth.nilsson@wsu.edu)

### Sheila Jernigan

Military Coordinator  
360-337-7157 Ext. #6268  
[sheila.jernigan@wsu.edu](mailto:sheila.jernigan@wsu.edu)

### General 4-H Email:

[kitsap.county4h@wsu.edu](mailto:kitsap.county4h@wsu.edu)

### Find us online:

<http://extension.wsu.edu/4H/>

### Find us on Facebook:

Kitsap County 4-H

### Kitsap County 4-H Extension

345 6th Street, Suite 550  
Bremerton WA, 98337  
(360) 337-7157

### Newsletter Submissions:

Please email information you would like included in the 4-H newsletter by the 20th of the month to: [Sheila.jernigan@wsu.edu](mailto:Sheila.jernigan@wsu.edu)

### Report Volunteer Hours:

[VOLUNTEER](#)



4-H 

WASHINGTON STATE UNIVERSITY  
EXTENSION

WSU Extension programs and employment are available to all without discrimination. Evidence on noncompliance may be reported through your local WSU Extension Office.